



BUSSETON

SENIOR HIGH SCHOOL



FINIS CORONAT OPUS: "THE FINAL RESULT REFLECTS THE WORK DONE"

YEAR 11 CURRICULUM HANDBOOK 2021

Welcome from the Principal

Our most important priority at Busselton Senior High School is to ensure all our students are 'successful students'. They must be given the opportunity to achieve excellent educational outcomes and develop necessary skills to be successful in their choice of further education or employment. I intend to ensure that our students' successes are not only measured by their results but also by the way the School value adds to them; that they graduate as successful members of society.

The school provides a high quality learning environment with quality teachers and excellent facilities including the Trade Training Centre and exceptional art, science and sporting facilities that ensures students are inspired to reach their academic potential. As an Independent Public School, we are very proud of our achievements. Our past results clearly demonstrate that we are catering to all students in the ATAR (University) and VET Pathways.

The partnership and relationship between home and school is critical in the successful education of your child; we encourage and welcome communication with the school. Working together, we need to focus on the destination, whether it be University, TAFE or employment, and then help our students choose the courses in line with their ability and interests that will enable them to get there.

I encourage you to read this handbook with your child, as in addition to identifying what we offer year 11 students at the school, it includes the most current information relating to the Western Australian Certificate of Education (WACE), Attainment and School Pathway options.

Please don't hesitate to contact staff at the school with any comments or questions you may have.

Regards



Dainon Couzic
Principal



Table of Contents

WELCOME FROM THE PRINCIPAL	2
WESTERN AUSTRALIAN CERTIFICATE OF EDUCATION	4
Achievement of a WACE	5
Literacy and numeracy	6
VET programs	8
Endorsed programs	9
Multiple pathways to achieve the WACE	9
Senior School Pathways	10
SCHOOL ASSESSMENT	11
Grades and school marks	11
Adjustment of grades and school marks	11
Externally set tasks (EST)	11
Authenticity of work	12
Review of school assessments	12
ATAR EXAMINATIONS	13
CERTIFICATION	13
Folio of achievement	14
EXHIBITIONS AND AWARDS	15
Eligibility for exhibitions and awards	15
Peak awards	15
Beazley medal: WACE	15
Beazley medal: VET	15
Awards for outstanding achievement	15
General exhibitions	15
General exhibition (ATSI)	15
Special general award	15
Awards for outstanding achievement in an ATAR course	16
Course exhibitions (ATAR courses)	16
Special course awards (ATAR courses)	16
Certificates of excellence (ATAR courses)	16
Special certificate of excellence (ATAR courses)	16
Awards for outstanding achievement in VET	17
VET exhibitions	17
Special VET awards	17
Certificates of excellence (VET)	17
Special certificate of excellence	17
Awards for outstanding achievement in the WACE	17
Certificates of merit and certificates of distinction	18
APPENDICES	16
Appendix 1: Courses	16
Appendix 2: Summary of courses	17
Appendix 3: Summary of Stand Alone VET Programs	26
Appendix 4: Summary of On Grid VET Programs	30
Appendix 5: WACE breadth-of-study list for the WACE in 2020	34



Western Australian Certificate of Education

This section is relevant to all students seeking to achieve the WACE in 2020.

The WACE is a certificate that demonstrates significant achievement over Years 11 and 12.

The WACE requirements

Achievement of your WACE acknowledges that at the end of your compulsory schooling you have achieved or exceeded the required minimum standards in an educational program that has suitable breadth and depth.

To achieve a WACE, a student must satisfy the following:

General requirements

- demonstrate a minimum standard of literacy and a minimum standard of numeracy
- complete a minimum of 20 units or equivalents as described below
- complete:
 - at least four Year 12 ATAR courses OR
 - at least five General course and/or ATAR courses or equivalent OR
 - a Certificate II (or higher) VET Qualification in combination with ATAR, General or Foundation courses.

**In the context of ATAR courses in the WACE, the term 'complete' requires that a student sits the ATAR course examination or has an approved sickness/misadventure application for not sitting the examination in that course. Students who do not sit the ATAR course examination will not have a course mark or grade recorded on their WASSA, nor will they receive an ATAR course report.*

Note: for ATAR courses with practical components, students must complete both the written and practical examinations.

Breadth and depth

Students must complete a minimum of 20 units or the equivalent. This requirement must include at least:

- a minimum of ten Year 12 units or the equivalent
- two completed Year 11 units from an English course and one pair of completed Year 12 units from an English course
- one pair of Year 12 units from each of List A (arts/languages/social sciences) and List B (mathematics/science/technology).

Achievement standard

Students must achieve 14 C grades (or equivalents, see below) in Year 11 and Year 12 units, including at least six C grades in Year 12 units (or equivalents).

Unit equivalence can be obtained through VET qualifications and/or endorsed programs. The maximum unit equivalence available through these programs is eight units – four Year 11 units and four Year 12 units. Students may obtain unit equivalence as follows:

- up to eight unit equivalents through completion of VET qualifications, **or**
- up to four unit equivalents through completion of endorsed programs, **or**
- up to eight unit equivalents through a combination of VET qualifications and endorsed programs, but with endorsed programs contributing no more than four unit equivalents.



The amount of unit equivalence allocated to VET qualifications and endorsed programs is as follows:
VET Qualifications

- Certificate I is equivalent to two Year 11 units
- Certificate II is equivalent to two Year 11 and two Year 12 units
- Certificate III or higher is equivalent to two Year 11 and four Year 12 units

Endorsed Programs - unit equivalence is identified on the Authority's approved list of endorsed programs.

There are five types of courses, three of which are offered at Busselton SHS, developed by the Authority (see Appendix 1 for a list of courses available in 2020 / 21) at Busselton Senior High School.

1. Australian Tertiary Admission Rank (ATAR) courses: ATAR course units are for students who are aiming to enrol in a university course directly from school. These courses will be examined by the Authority and contribute to the achievement of an Australian Tertiary Admission Rank (ATAR).
2. General courses: General course units are for students who are aiming to enter further training or the workforce directly from school. These courses will not be examined by the Authority.
3. Vocational Education and Training (VET) Industry specific courses: Vocational Education and Training industry specific courses are for students who are aiming to enter further training or the workforce directly from school. VET Industry Specific courses have been developed in close consultation with WA Industry Training Councils and include a full, nationally recognised qualification and mandatory industry-related workplace learning.

There are two types of programs which can contribute to the WACE:

1. VET programs
2. Endorsed programs

In Year 10, you have the opportunity to choose what you will study in Years 11 and 12. Appendix 2 provides a summary of each course.

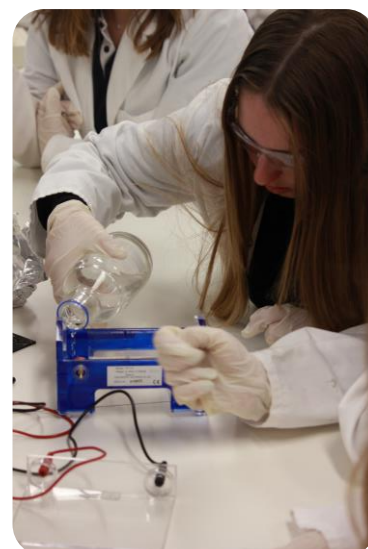
Achievement of a WACE

Courses units/programs from these groups contribute to the achievement of a WACE: ATAR, General, Foundation, VET industry specific courses, VET qualifications and endorsed programs.

WACE courses are grouped into
List A (arts/languages/social sciences) and
List B (mathematics/science/technology).

Students studying for a WACE are required to select at least one Year 12 course from each of List A and List B.
Appendix 3 lists the subjects as List A and List B.

Schools choose to offer courses that meet the needs and interests of their students in line with the resources they have available. You are able to select across a range of courses at a range of cognitive levels to suit your skills and post-school aspirations. If you think you will be heading to university once you finish Year 12, you should enrol in at least four ATAR courses.



The rank is used by universities as a selection mechanism. More information about the ATAR is available at the TISC website at <http://www.tisc.edu.au/>.

If you do not complete the course requirements to achieve an ATAR you will need to achieve a minimum of a Certificate II qualification.



Each course has four units, Units 1 and 2 (Year 11 units) and Units 3 and 4 (Year 12 units). The different certificates (I, II and III) available through VET industry specific courses are packaged as two or four units. Unit 1 and Unit 2 **can** be studied as a pair, Unit 3 and Unit 4 **must** be studied as a pair. Unlike other WACE courses, VET course units are paired in both the Year 11 (Unit 1 and Unit 2) and the Year 12 (Unit 3 and Unit 4) syllabuses. A student who withdraws from a VET course after only one semester will not receive VET course unit credit for that academic year.

Permission for a student to change courses is a school decision; however, for a student to achieve course unit credits, a change can only be made early in Year 12, before the cut-off date set by the Authority; or in Year 11 early in the year after the completion of Unit 1, or at the end of Year 11 after the completion of Unit 2. A student who withdraws from a VET industry specific course does not achieve course unit credits.

The Western Australian Statement of Student Achievement

A Western Australian Statement of Student Achievement is issued to all Year 12 students who complete any study that contributes towards a WACE. It lists all courses and programs students have completed in Year 11 and 12.

Literacy and numeracy

There are two parts to demonstrating competence in literacy and numeracy. Firstly, you are required to complete two Year 11 units from an English course and a pair of Year 12 units from an English course. Secondly, you must demonstrate that you have met the minimum standard for literacy and numeracy, which is based on skills regarded as essential for individuals to meet the demands of everyday life and work.

You can demonstrate the minimum standard:

- Through the Authority's Online Literacy Numeracy Assessment (OLNA), or
- If you demonstrated Band 8 or higher in your Year 9 NAPLAN, Reading, Writing and Numeracy tests.

The OLNA is compulsory for those students who have not prequalified in one or more of the components through Year 9 NAPLAN and want to achieve the WACE. Students will have up to six opportunities (two per year) between Year 10 and Year 12 to demonstrate the literacy and numeracy minimum standard.

There are three assessment components:

- One 60-minute, 60-item multiple-choice of Reading
- One 60-minute, 60-item multiple-choice of Numeracy, and
- One 60-minute, extended response in Writing of between 300 and 600 words



If you have a language background other than English and arrived from overseas in the past year you may be able to delay sitting the OLNA. You should discuss your options with your careers counsellor. Disability provisions are available for students with significant conditions which may severely limit their capacity to participate in the OLNA. These students, after discussions with parents/carers and the school, may choose not to sit the OLNA. However, this would mean that these students could not achieve the WACE. Students should discuss their options with their careers counsellor.



Vocational Education and Training

A number of Vocational Education and Training qualifications are available to students. These nationally recognised qualifications provide pathways to employment and/or further training.

If your educational program does not include four ATAR courses in Year 12, you will need to complete a Certificate II VET qualification or higher to achieve your WACE. You can begin training for your career while still at school by undertaking one or more VET qualifications in the industry areas that interest you. Appendix 3 and Appendix 4 outline the qualifications available at Busselton Senior High School.

Student Welfare and Guidance Services

Busselton Senior High School follows a whole school approach to ensure the health and wellbeing of our students is a priority. All VET students have full access to the range of welfare and guidance services available at the school. These services include but are not limited to: teachers, Program Coordinators, VET Coordinator, Senior School Associate Principal, School Nurse, School Psychologist and Chaplain. Program Coordinators communicate with parents, students and teachers to provide a high level of pastoral care.

Students requiring additional support in literacy and numeracy will be referred to OLNA support classes.

VET Fee Structure & Information

A list of fees and charges (*Contribution and Charges Booklet*) is provided to students/parents prior to the commencement of the course. Please refer to the School's **2020 Contributions and Charges Booklet** for information regarding course costs, deposits and refunds.

In regard to refunds in the case of a student leaving the school, the Department of Education **Refund of Secondary Charges and Voluntary Contributions Policy** is applied. Refunds are paid according to the time that a student leaves the school, summarised below:

Refund/Billing Schedule for Charges and Voluntary Contributions in Secondary Schools

Term 1	80-100 %
Term 2	50-80%
Term 3	30-50%
Term 4	Nil

VET Courses and Personal Requirements

Students may also be required to purchase uniform, texts and personal stationery items. These requirements will be discussed at the time of student/parent interview. **Yr 11/12 Personal Items Lists** outline specific text and personal requirements. These are also issued prior to enrolment.

VET Courses and Entry Requirements

There are no specific entry requirements for VET Programs. However, all students will need to attend an interview with a parent/guardian.

VET Course Delivery

VET qualifications are delivered over two years with a minimum of 5 hours per week dedicated to delivery. Students will also complete a minimum of 110 hours per year in Workplace Learning. Specific details of each program and work placement arrangements are explained in *Appendix 3* and *Appendix 4* from page 27.

All VET courses are delivered face to face.

Busselton Senior High School is a Registered Training Organisation, RTO Code 50537. In the unlikely event that the RTO is unable to deliver services, risk management processes would ensure the outsourcing of qualifications to ensure delivery of qualifications as indicated at enrolment.



VET Courses – Complaints

Students are given every opportunity to access an equitable process for complaints. In the first instance, complaints should be outlined to the Program Coordinator or the VET Coordinator. Complaints will be dealt with fairly and with due consideration to time.

If a situation is not resolved informally, the complaint should be made in writing and lodged with the VET Coordinator. This will be acknowledged within 2 working days. If the issue is not resolved by the VET Coordinator, the matter will be referred to the Principal for resolution as per the process for Complaints and Appeals.

VET Courses – Appeals

Students have the right to lodge an appeal against the assessment of a competency if:

- ◆ the assessment process didn't provide a fair and reasonable opportunity to demonstrate competence.
- ◆ they were not informed in advance of the assessment conditions or type of assessment
- ◆ they were ill at the time of the assessment (must be supported by a medical certificate).

In the first instance, students should discuss the appeal with the teacher. If not satisfied, the student should ask the teacher or VET Coordinator for an Appeals Record Form and submit to the Principal. The appeal will be processed according to the BSHS RTO Appeals process. If the appeal is successful at any stage you will be given the opportunity to be re-assessed. If the appeal judgement is unsatisfactory appellants will be advised to contact the Training Accreditation Council.

**Processes for Complaints and Appeals are explained to students as part of their induction to competency based assessment and Competency Assessment Books at the commencement of their program.*

Endorsed Programs

Endorsed programs address areas of learning not covered by WACE courses. Examples include Workplace Learning, Cadets WA, performance in school productions and independently administered examinations in music, speech and drama. These programs can be delivered in a variety of settings by schools, community organisations, universities, training organisations and workplaces.

Endorsed programs may replace up to two Year 11 course units and two Year 12 course units you need to achieve your WACE. At Busselton Senior High School endorsed programs comprise of (among others) Workplace Learning, (and the Year 10 Keys for Life Program).

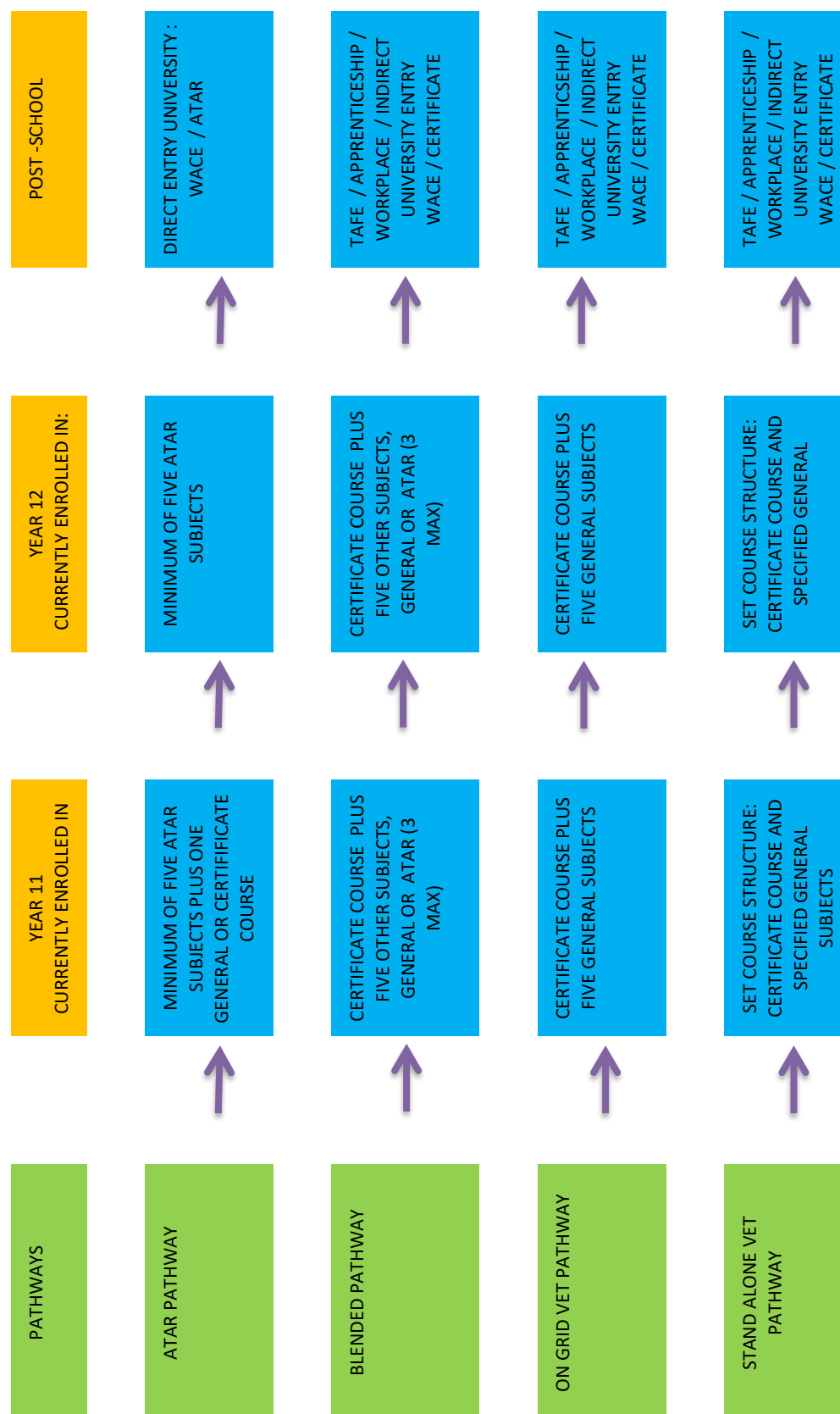
Multiple pathways to achieve the WACE

The WACE breadth and depth of study requirement previously outlined, specifies that students must complete a minimum of 20 units (10 courses) during Years 11 and 12, including a minimum of 10 Year 12 units or equivalents. Students may use ATAR courses, General courses, VET industry specific courses, Foundation courses, VET qualifications, or endorsed programs to meet this requirement.

There are limits to the number of VET qualifications (not VET industry specific) and endorsed programs that may contribute to achievement of WACE. In summary, students can gain unit equivalence of up to four Year 11 units and four Year 12 units on the basis of completed VET qualifications and endorsed programs but a maximum of four units from endorsed programs.



Busselton Senior High School
Senior Secondary Pathway





School Assessment

(This section is relevant to all students.)

Grades and school marks

To be assigned a grade in a WACE unit pair, you must have had the opportunity to complete your school's education and assessment programs for the unit, unless there are exceptional circumstances that are acceptable to the school.

Teachers of Year 11 and Year 12 students submit results to the Authority at the end of the school year based on assessments such as classroom tests, in-class work, assignments, practical work and examinations.

You will receive a grade A, B, C, D or E for each unit pair you have completed. The notation of 'U' can be used non-final year students who, for reasons acceptable to the school, do not complete the assessment program. Only students who will be returning the following year to complete the assessment program can be awarded a 'U' notation.

You will also receive a school mark in the range 0 to 100 for each unit pair of an ATAR or General course you complete.

In Year 11 there may be occasions when you need to change your course enrolment at the completion of Semester 1 (e.g. you may nominate to transfer from an ATAR course to a General course). Only in these cases will you receive a grade and mark for each individual unit you have completed.

You will receive a 'completed' status instead of a grade for VET course unit pairs. The notation 'completed' counts the same as a C grade. If you do not complete the requirements of a VET course you will be awarded a 'U' notation (see above) and WACE credit may contribute as VET unit equivalence, depending on how much of the course you have finished.

Endorsed programs are not comprised of units, but a completed endorsed program is allocated one, two, three or four unit equivalents.

Adjustment of grades and school marks

During the school year, the Authority uses several procedures to ensure that the grades awarded by different schools are comparable. Grades assigned by your school are based on the Authority's grade descriptions for each course. The grades you receive from your school are provisional until confirmed by the Authority. Your school is required to advise you in writing if any changes are made to your provisional grades during the approval process. However, the Authority adjusts the grades assigned by a school only in exceptional circumstances.

Externally set tasks (EST)

An EST is a common task that all students enrolled in a General course will do in Semester 1 of Year 12. The task is set by the Authority, completed by students under test conditions, and is worth 15 per cent of the final mark for that pair of units. ESTs are marked by your teacher using a marking key provided by the Authority.

Authenticity of work

It is imperative that all work you submit for school assessment is your own. Any material that is included in your work that is not your own must be acknowledged appropriately.

Your school's assessment policy will outline the penalties for submitting another's work as your own. Work which could not be considered your own could include, but is not limited to:

- copying someone's work in part or in whole, and presenting it as your own
- buying, stealing or borrowing another person's work and presenting it as your own
- paying someone to write or prepare work
- submitting work to which another person (such as a parent, tutor or subject expert) has contributed substantially
- using material directly from sources such as books, journals or the internet without reference to the source
- building on the ideas of another person without reference to the source
- using the words, ideas, designs or the workmanship of others in practical tasks (performance, production or portfolio) without appropriate acknowledgement
- using non-approved materials and/or equipment during an assessment task or examination
- assisting another student to engage in an activity that will enable that student to have an unfair advantage over other students.

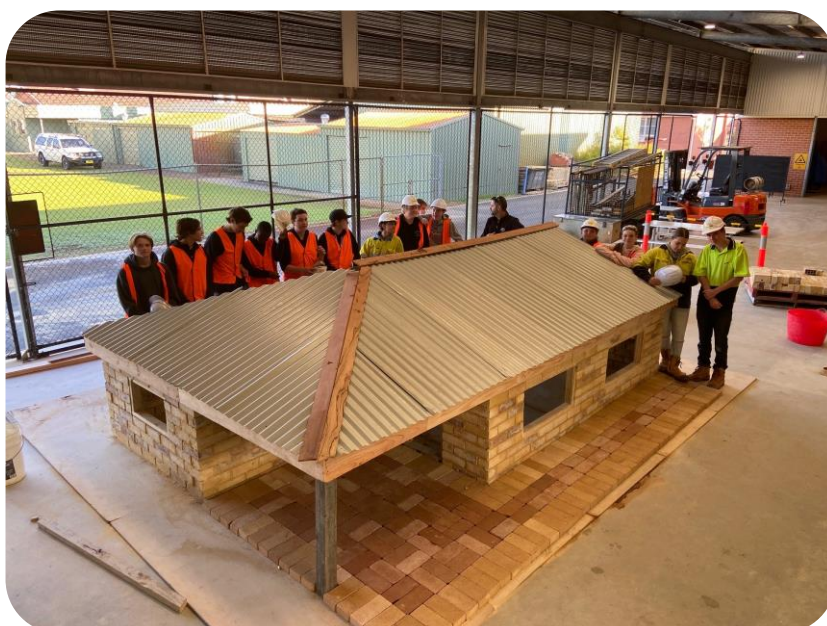
All the work you submit as part of the WACE practical component (ATAR and General Units 3 and 4) must also be your own work. Any material included in your work that is not your own must be acknowledged appropriately.

Review of school assessments

Schools must inform students in writing of their grades by a date specified annually by the Authority (usually in late October).

If you believe that your grade and/or school mark is incorrect, you should make a request in writing to your school for a review of the result.

The Busselton Senior High School Assessment Policy reflects the principles of the School Curriculum and Standards Authority policy.





ATAR Examinations

(This section is relevant to students who intend to enrol in ATAR Units 3 and 4.)

ATAR examinations

The Authority sets, administers and marks ATAR examinations for ATAR Units 3 and 4 in all courses. Each ATAR examination assesses the specific content, understandings, knowledge and skills described in the syllabus for the pair of units studied. Each syllabus is available on the relevant course page of the Authority website at

http://www.scsa.wa.edu.au/internet/Senior_Secondary/Courses/WACE_Courses.

All ATAR examinations have written papers and some also include practical, oral, performance or portfolio examinations. The practical ATAR examinations are held in the first week of the Term 3 school holidays, on weekends and the Queen's Birthday public holiday and during the second and third weeks of Term 4. Written examinations will start on the first Monday in November.

ATAR examinations provide students and the wider community with confidence about the standards achieved at the end of Year 12. They also make it possible to compare the achievement of students, regardless of the school attended.

Enrolling in examinations

When you enrol in a Year 12 ATAR course, you will be automatically enrolled to sit the ATAR examination in that course.

If you are applying for university admission, you should check that your course selections meet the entry requirements. University admission information is available on the TISC website at www.tisc.edu.au.

Special examination arrangements

Special arrangements may be made if you have permanent or temporary disabilities that may disadvantage you in an examination situation. If your disability prevents you having reasonable access to an examination, your school must submit an application on your behalf. Information about how to do this will be made available to your school at the start of Year 12.

Certification

Folio of Achievement

At the end of senior secondary schooling, all students who have satisfactorily completed any WACE course unit, VET certificate or endorsed program will receive a folio of achievement. This folio may include one or more of the following:

- WACE
- WASSA
- ATAR course report
- Award certificates achieved.

The WACE indicates that you have satisfied the requirements for WACE achievement (see page 4).

Western Australian Statement of Student Achievement (WASSA)

A statement of student achievement is issued to all Year 12 students at the completion of their secondary schooling. The statement of student achievement formally records, as relevant:

- achievement of WACE requirements
- achievement of literacy (reading and writing) standard
- achievement of numeracy standard
- achievement of exhibitions and awards
- school grades, school marks, and combined scores in ATAR units*
- school grades and school marks in General and Foundation units*
- completed Preliminary units
- completed VET industry specific units
- successfully completed VET qualifications and VET units of competency
- completed endorsed programs
- number of community service hours undertaken (if reported by the school).

ATAR Course Report

An ATAR course report is issued to students (excluding private candidates) who sit an ATAR course examination in that course. The ATAR course report records:

- school marks
- moderated school marks
- examination marks
- combined score
- state-wide distribution of combined scores in that course
- the number of candidates for that examination.

The ATAR course report shows how the student performed relative to all other students who completed the course (represented by a location on a graph).





Exhibitions and Awards

(This section is relevant to all students who will achieve a WACE. It provides information about the exhibitions and awards granted by the Authority, which recognise individual excellence at the end of Years 11 and 12.)

Your achievements in Year 11 and Year 12 will be used to determine if you are granted an award by the Authority. Full details regarding exhibitions and awards are available on the Authority website at [www.scsa.wa.edu.au/internet/Senior_Secondary/Exhibitions and Awards](http://www.scsa.wa.edu.au/internet/Senior_Secondary/Exhibitions_and_Awards).

Eligibility for exhibitions and awards

To achieve a Beazley medal: WACE, a Beazley medal: VET, a general exhibition, a general exhibition (ATSI), a course exhibition, a VET exhibition, a certificate of excellence, a certificate of distinction or a certificate of merit, a student must:

- be an Australian citizen or a permanent resident of Australia
- have been enrolled as a full-time student in a registered secondary school
- have satisfied the requirements for a WACE at the time of the determination of the award/exhibition (except for course exhibitions and certificates of excellence).

Special general awards, special course awards, special VET awards, and special certificates of excellence may be awarded to students who do not meet the general eligibility criteria.

Peak awards

Beazley medal: WACE

The Beazley medal: WACE is awarded for excellence to the eligible student who achieves the top WACE award score which is used to rank students for general exhibitions (see below).

Beazley medal: VET

The Beazley medal: VET is awarded to the eligible student who has demonstrated the most outstanding performance in a VET Certificate II or higher and in their other WACE achievements.

Awards for outstanding achievement

General exhibitions

Forty awards, known as general exhibitions, are awarded to eligible students who obtain the highest WACE award score. The WACE award score is based on the average of five scaled examination scores in ATAR courses, calculated to two decimal places, with at least two from each of List A and List B.

General exhibition (ATSI)

One award, known as the general exhibition (ATSI), may be awarded to the Aboriginal and Torres Strait Islander student who is eligible and achieves the highest WACE award score.

To be eligible for this award, the student must be an Aboriginal or Torres Strait Islander as defined by the Australian Bureau of Statistics. A student may receive both a general exhibition and the general exhibition (ATSI).



Special general award

A special general award is presented to a student not eligible for the award of a general exhibition because they have not satisfied the general criteria for eligibility, but who have otherwise achieved the requirements for the award of a general exhibition, and whose WACE award score is not below the lowest score for which a general exhibition is awarded.

Awards for outstanding achievement in an ATAR course

(These awards relate to ATAR courses only)

Course exhibitions (ATAR courses)

A course exhibition may be awarded to the eligible student obtaining the highest examination mark for each ATAR course, provided that at least 100 candidates sat the examination. To be eligible for a course exhibition, the student must have completed the pair of Year 12 units in the course in the year of the award, and have not previously sat the WACE examination for that course.

Special course awards (ATAR courses)

A special course award may be presented to a candidate not eligible for a course exhibition because they have not satisfied the general criteria for eligibility but who have otherwise achieved the requirements for a course exhibition.

Certificates of excellence (ATAR courses)

Certificates of excellence are awarded to eligible candidates who are in the top 0.5 per cent of candidates in each ATAR course examination, based on the examination mark, or the top two candidates (whichever is the greater) in a course where at least 100 candidates sit the ATAR course examination. The number of certificates of excellence issued for each course is based on the number of candidates who sit the ATAR course examination. Where a course includes both written and practical components, the examination mark will be determined using an appropriate statistical process to combine the two examination marks.

To be eligible for a certificate of excellence, the student must have completed the pair of Year 12 units in the course in the year of the award and have not previously sat the WACE examination for that course.

Special certificate of excellence (ATAR courses)

A special certificate of excellence is awarded to candidates not eligible for the award of a certificate of excellence because they have not satisfied the general criteria for eligibility but who have otherwise achieved the requirements for the award of a certificate of excellence.



Awards for outstanding achievement in VET

VET exhibitions

A VET exhibition may be awarded to the eligible student who has demonstrated the most outstanding performance in an AQF VET Certificate II or higher and in their other course achievements. The student who is ranked first in the selection process for a VET certificate of excellence will be awarded the VET exhibition in that industry area.

Special VET awards

A special VET award may be presented to a student not eligible for the VET exhibition because they have not satisfied the general criteria for eligibility but who have otherwise achieved the requirements for a VET exhibition. Only one award will be available in an industry area.

Certificates of excellence (VET)

Certificates of excellence may be awarded to eligible Year 12 students who complete an AQF VET Certificate II or higher in one of the 13 training package industry areas and who are in the top 0.5 per cent of candidates. The units of competency achieved for the certificate may have been undertaken in VETis courses or other VET programs.

Special certificate of excellence

A special certificate of excellence (VET) may be presented to a student not eligible for the certificate of excellence (VET) because they have not satisfied the general criteria for eligibility but who have otherwise achieved the requirements for a certificate of excellence (VET).

Awards for outstanding achievement in the WACE

Certificates of merit and certificates of distinction

Certificates of merit and certificates of distinction recognise student achievement in the WACE and are dependent on the degree of difficulty of the courses and programs undertaken together with the student's level of achievement. These awards will be based solely on the grades awarded to students by their schools.



Appendices

APPENDIX 1: COURSES.....	18
APPENDIX 2: SUMMARY OF COURSES.....	19
APPENDIX 3: SUMMARY OF STAND ALONE VET PROGRAMS.....	26
APPENDIX 4: SUMMARY OF ON GRID VET PROGRAMS.....	29
APPENDIX 5: WACE BREADTH-OF-STUDY LIST FOR THE WACE IN 2019.....	32

Appendix 1: Courses

General: School Assessment Only (Moderated with externally set task)	ATAR: 50% School Assessment 50% External Examination
Accounting and Finance	
	Biology
Careers and Enterprise	
	Chemistry
English	English
Food Science and Technology	
	Geography
	Human Biology
Materials, Design and Technology: Metals	
Materials, Design and Technology: Wood	
Mathematics Essential	Mathematics Applications
	Mathematics Methods
	Mathematics Specialist
Media Production and Analysis	
	Modern History
	Music: Contemporary
Outdoor Education	
Physical Education Studies	Physical Education Studies
	Physics
Visual Arts	Visual Arts

Appendix 2: Summary of Courses



The Arts

Media Production and Analysis: General

Music (Contemporary): ATAR

Visual Arts: ATAR

Visual Arts: General

Media Production and Analysis (No Prerequisite)

The Media Production and Analysis ATAR course aims to prepare students for a future in a digital and interconnected world by providing the skills, knowledge and understanding to tell their own stories and interpret the stories of others. Students are encouraged to explore, experiment and interpret their world, reflecting and analysing contemporary life, while understanding that this is done under social, cultural and institutional constraints. Students, as users and creators of media products, consider the important role of audiences and their context. This course focuses on the application of media theory in the practical process.

Music ATAR (Prerequisite – A / B Grade in Yr. 10 Classroom Music)

The Music (Contemporary) ATAR course encourages students to explore a range of musical experiences, developing their musical skills and understanding, and creative and expressive potential. The course consists of a written component incorporating Aural and Theory, Composition and arrangement, Cultural and historical analysis, and a practical component. The practical component can be delivered in a different context, independent of the written component. Students can choose to perform on an instrument or voice in one of four contexts, and/or submit a composition portfolio. The Music course provides opportunities for creative expression, the development of aesthetic appreciation, and understanding and respect for music and music practices across different times, places, cultures and contexts. Students listen, compose, perform and analyse music, developing skills to confidently engage with a diverse array of musical experiences, both independently and collaboratively. Studying music may also provide a pathway for further training and employment in a range of professions within the music industry.

Visual Arts ATAR (Prerequisite – A / B Grade in Yr. 10 Art)

In the Visual Arts ATAR course, students engage in traditional, modern and contemporary media and techniques within the broad areas of art forms. The course promotes innovative practice. Students are encouraged to explore and represent their ideas and gain an awareness of the role that artists and designers play in reflecting, challenging and shaping societal values. The Visual Arts ATAR course allows students to develop aesthetic understandings and a critical awareness to appreciate and make informed evaluations of art through their engagement of their own art practice and the work of others.



Visual Arts General Course (No Prerequisite)

In the Visual Arts General course, students engage in traditional, modern and contemporary media and techniques within the broad areas of art forms. The course promotes innovative practice. Students are encouraged to explore and represent their ideas and gain an awareness of the role that artists and designers play in reflecting, challenging and shaping societal values. Students are encouraged to appreciate the work of other artists and engage in their own art practice.

English

English: ATAR, General

English ATAR (Prerequisite – A / B Grade in Yr. 10 English)

The English ATAR course focuses on developing students' analytical, creative, and critical thinking and communication skills in all language modes, encouraging students to critically engage with texts from their contemporary world, the past, and from Australian and other cultures. Through close study and wide reading, viewing and listening, students develop the ability to analyse and evaluate the purpose, stylistic qualities and conventions of texts and to enjoy creating imaginative, interpretive, persuasive and analytical responses in a range of written, oral, multimodal and digital forms.

English General (No Prerequisite)

The English General course focuses on consolidating and refining the skills and knowledge needed by students to become competent, confident and engaged users of English in everyday, community, social, further education, training and workplace contexts. The course is designed to provide students with the skills to succeed in a wide range of post-secondary pathways by developing their language, literacy and literary skills. Students comprehend, analyse, interpret, evaluate and create analytical, imaginative, interpretive and persuasive texts in a range of written, oral, multimodal and digital forms.

Health and Physical Education

Physical Education Studies: ATAR, General

Outdoor Education General (Prerequisite - Stage 6 or above swimming ability, this course is only delivered in VET Recreation Studies)

Through interaction with the natural world, Outdoor Education aims to develop an understanding of our relationships with the environment, others and ourselves. The Outdoor Education General course focuses on outdoor activities in a range of environments, including bushwalking, sailing, climbing and orienteering. It provides students with an opportunity to develop essential life skills and physical activity skills, and an opportunity to develop a comprehensive understanding of the environment and develop a positive relationship with nature. The course also provides students with opportunities to develop skills that will enable them to pursue personal interests and careers in outdoor pursuits, environmental management, or ecotourism.

Physical Education Studies ATAR (Prerequisite – A / B Grade in Yr. 10 – Physical Education & Science)

Physical Education Studies contributes to the development of students' physical, social and emotional growth. In the Physical Education Studies ATAR course students learn about physiological, psychological and biomechanical principles, and apply these to analyse and improve personal and group performances in physical activities. Throughout the course, students learn through integrated written, oral and active learning experiences. The course also provides students with opportunities to develop skills that will enable them to pursue personal interests and potential in physical activity as athletes, coaches, officials, administrators and/or volunteers.

Physical Education Studies General (No Prerequisite)

Physical Education Studies contributes to the development of students' physical, social and emotional growth. The Physical Education Studies General course provides students with opportunities to understand and improve performance through the integration of theoretical concepts and practical activities. Through engagement as performers, leaders, coaches, analysts and planners of physical activity, students may develop skills that can be utilised in leisure, recreation, education, sport development, youth work, health and medical fields.





Humanities and Social Sciences

Accounting and Finance: General
Careers and Enterprise: General
Geography: ATAR
Modern History: ATAR

Accounting and Finance General (No prerequisite – only delivered in VET Business Studies)

The Accounting and Finance General course focuses on financial literacy and aims to provide students with the knowledge, understandings and a range of skills that enables them to engage in sound financial decision making. Students develop an understanding that financial decisions have far reaching consequences. Through the preparation, examination and analysis of financial documents and procedures, students develop an understanding of the fundamental principles and practices upon which accounting and financial management are based. An understanding of these principles and practices enables students to analyse their own financial data and that of small businesses, and make informed decisions based on that analysis.

Career and Enterprise General (No Prerequisite)

Career education involves learning to manage and take responsibility for personal career development. The Career and Enterprise General course involves recognising one's individual skills and talents, and using this understanding to assist in gaining and keeping work. The course develops a range of work skills and an understanding of the nature of work. Key components of the course include: the development of an understanding of different personality types and their link to career choices; entrepreneurial behaviours; learning to learn; and the exploration of social, cultural and environmental issues that affect work, workplaces and careers.

Modern History ATAR (Prerequisite – A / B Grade in Yr. 10 SOSE & English)

Studying the Modern History ATAR course enables students to become critical thinkers and helps inform their judgments and actions in a rapidly changing world. Students are exposed to a variety of historical sources, including government papers, extracts from newspapers, letters, diaries, photographs, cartoons, paintings, graphs and secondary sources, in order to determine the cause and effect, and the motives and forces influencing people and events. Through the process of historical inquiry, students are encouraged to question and evaluate historical sources; identify various representations and versions of history; use evidence to formulate and support their own interpretations; and communicate their findings in a variety of ways.



Geography ATAR

(Prerequisite – A / B Grade in Yr. 10 SOSE & English)

The study of the Geography ATAR course draws on students' curiosity about the diversity of the world's places and their peoples, cultures and environments. It provides students with the knowledge and understanding of the nature, causes and consequences of natural and ecological hazards, international integration in a range of spatial contexts, land cover transformations, and the challenges affecting the sustainability of places.

In the ATAR course, students learn how to collect information from primary and secondary sources, such as field observation and data collection, mapping, monitoring, remote sensing, case studies and reports.

Mathematics

Mathematics Methods: ATAR
Mathematics Specialist: ATAR
Mathematics Applications: ATAR
Mathematics Essential: General

Mathematics Methods ATAR (Prerequisite – A / B Grade in Yr. 10 Mathematics)

The study of calculus provides a basis for understanding rates of change in the physical world, and includes the use of functions, their derivatives and integrals, in modelling physical processes. The study of statistics develops students' ability to describe and analyse phenomena that involve uncertainty and variation. This course focuses on the use of calculus and statistical analysis. Mathematics Methods provides a foundation for further studies in disciplines in which mathematics and statistics have important roles. It is also advantageous for further studies in the health and social sciences. In summary, this course is designed for students whose future pathways may involve mathematics and statistics and their applications in a range of disciplines at the tertiary level.

Mathematics Specialist ATAR (Prerequisite – A Grade in Yr. 10 Mathematics)

This course provides opportunities, beyond those presented in the Mathematics Methods ATAR course, to develop rigorous mathematical arguments and proofs, and to use mathematical models more extensively. Mathematics Specialist contains topics in functions and calculus that build on and deepen the ideas presented in the Mathematics Methods course, as well as demonstrate their application in many areas. The Mathematics Specialist course also extends understanding and knowledge of statistics and introduces the topics of vectors, complex numbers and matrices. Mathematics Specialist is the only ATAR mathematics course that should not be taken as a stand-alone



course and it is recommended to be studied in conjunction with the Mathematics Methods ATAR course as preparation for entry to specialised university courses such as engineering, physical sciences and mathematics.

Mathematics Applications ATAR (Prerequisite – A / B Grade in Yr. 10 Mathematics)

This course focuses on the use of mathematics to solve problems in contexts that involve financial modelling, geometric and trigonometric analysis, graphical and network analysis, and growth and decay in sequences. It also provides opportunities for students to develop systematic strategies based on the statistical investigation process for answering statistical questions that involve analyzing univariate and bivariate data, including time series data. The Mathematics Applications ATAR course is designed for students who want to extend their mathematical skills beyond Year 10 level, but whose future studies or employment pathways do not require knowledge of calculus. The course is designed for students who have a wide range of educational and employment aspirations, including continuing their studies at university or TAFE.

Mathematics Essential General (No Prerequisite)

The Mathematics Essential General course focuses on using mathematics effectively, efficiently and critically to make informed decisions. It provides students with the mathematical knowledge, skills and understanding to solve problems in real contexts for a range of workplace, personal, further learning and community settings. This course provides the opportunity for students to prepare for post-school options of employment and further training.

Science

Biology: ATAR
Chemistry: ATAR
Human Biology: ATAR
Physics: ATAR

Biology ATAR (Prerequisite – A / B Grade in Yr. 10 Science)

A unique appreciation of life and a better understanding of the living world are gained through studying the Biology ATAR course. This course encourages students to be analytical, to participate in problem-solving and to systematically explore fascinating and intriguing aspects of living systems, from the microscopic level through to ecosystems.

Students develop a range of practical skills and techniques through investigations and fieldwork in authentic contexts, such as marine reefs, endangered species, urban ecology, or biotechnology. Scientific evidence is used to make informed decisions about controversial issues.

Chemistry ATAR (Prerequisite – A / B Grade in Yr. 10 Science)

The Chemistry ATAR course equips students with the knowledge, understanding and opportunity to investigate properties and reactions of materials. Theories and models are used to describe, explain and make predictions about chemical systems, structures and properties. Students recognise hazards

and make informed, balanced decisions about chemical use and sustainable resource management. Investigations and laboratory activities develop an appreciation of the need for precision, critical analysis and informed decision making.

This course prepares students to be responsible and efficient users of specialised chemical products and processes at home or in the workplace. It also enables students to relate chemistry to other sciences, including biology, geology, medicine, molecular biology and agriculture, and prepares them for further study in the sciences.

Human Biology ATAR (Prerequisite – A / B Grade in Yr. 10 Science)

The Human Biology ATAR course gives students a chance to explore what it is to be human—how the human body works, the origins of human variation, inheritance in humans, the evolution of the human species and population genetics. Through their investigations, students research new discoveries that increase our understanding of human dysfunction, treatments and preventative measures.

Practical tasks are an integral part of this course and develop a range of laboratory skills; for example, biotechnology techniques. Students learn to evaluate risks and benefits to make informed decisions about lifestyle and health topics, such as diet, alternative medical treatments, use of chemical substances and the manipulation of fertility.

Physics ATAR (Prerequisite – A / B Grade in Yr. 10 Science)

In the Physics ATAR course students will learn how energy and energy transformations can shape the environment from the small scale, in quantum leaps inside an atom's electron cloud, through the human scale, in vehicles and the human body, to the large scale, in interactions between galaxies. Students have opportunities to develop their investigative skills and use analytical thinking to explain and predict physical phenomena. Students plan and conduct investigations to answer a range of questions, collect and interpret data and observations, and communicate their findings in an appropriate format. Problem solving and using evidence to make and justify conclusions are transferable skills that are developed in this course.



Technologies

Applied Information Technology: General

Food Science and Technology: General

Materials, Design and Technology (Metals): General

Materials, Design and Technology (Wood): General

Applied Information and Technology General (No prerequisite – only delivered in VET Business Studies)

The Applied Information Technology General course provides students with the knowledge and skills to use a range of computer hardware and software to create, manipulate and communicate information in an effective, responsible and informed manner. Students develop an understanding of computer systems; the management of data; and the use a variety of software applications to investigate, design, construct and evaluate digital products and digital solutions. The course offers pathways to further studies and a range of technology-based careers and a set of skills that equip students for the 21st century and give them an appreciation of the impact of information technology on society.

Food Science and Technology General (No Prerequisite)

The Food Science and Technology General course provides opportunities for students to explore and develop food-related interests and skills. Food impacts on every aspect of daily life and is essential for maintaining overall health and wellbeing. Students organise, implement and manage production processes in a range of food environments and understand systems that regulate food availability, safety and quality. Knowledge of the sensory, physical, chemical and functional properties of food is applied in practical situations. Students investigate the food supply chain and value-adding techniques applied to food to meet consumer and producer requirements. Principles of dietary planning, adapting recipes, and processing techniques, are considered for specific nutritional needs of demographic groups. Occupational safety and health requirements, safe food handling practices, and a variety of processing techniques, are implemented to produce safe, quality food products. This course may enhance employability and career opportunities in areas that include nutrition, health, food and beverage manufacturing, food processing, community services, hospitality and retail.



Materials Design and Technology (Metals) General (No Prerequisite)

The Materials Design and Technology General course is a practical course. Students can choose to work with metal, textiles or wood, with the design and manufacture of products as the major focus. Students have the opportunity to develop and practice skills that contribute to creating a physical product, while acquiring an appreciation of the application of a design process, and an understanding of the need for materials sustainability. Students will learn and practice manufacturing processes and technologies, including principles of design, planning and management.

Materials Design and Technology (Wood) General (No Prerequisite)

The Materials Design and Technology General course is a practical course. Students can choose to work with **wood** to design and manufacture products as their major focus.

Students have the opportunity to develop and practise skills that contribute to creating a physical product, while acquiring an appreciation of the application of a design process, and an understanding of the need for materials sustainability. Students will learn and practise manufacturing processes and technologies, including principles of design, planning and management.

.....



Appendix 3: Summary of Stand Alone VET Programs

BUSINESS STUDIES

(BSB20115 - Certificate II Business) – RTO Busselton SHS – 50537

Pathways

- A wide range of employment opportunities
- Traineeships
- TAFE and/or further training

Program (Yr. 11)

- English General
- Essential Maths
- Applied Information Technology General
- Accounting and Finance General
- BSB20115 - Certificate II Business
- Workplace Learning (Endorsed Program)

Work Placement (1 day per week)

- Events Management
- Tourism
- Office Administration
- Accounting/Record Keeping
- Hairdressing/Beauty Therapy
- Teacher Assistant/Childcare
- Retail (e.g. fashion, surf wear, electrical goods)
- Information Technology
- Interior/Graphic Design
- Reception

Qualifications

- WACE/Secondary Graduation
- BSB20115 Certificate II in Business
- Work Safe Certificates

Course Benefits

- Exceptional employment prospects
- Valuable life skills
- High level computing skills suited to ANY workplace
- Increased confidence, communication and interpersonal skills
- A wealth of experience in the workplace
- A strong sense of the types of work they would like to pursue a career in
- This course is well suited to students who are not yet sure of their career aspirations and would like to develop skills that will allow them to pursue a very wide range of career options

Mode of Delivery: On site, face to face

Course Structure: 4 days on-site/1 day work placement



MANUFACTURING INDUSTRIES STUDIES

(MEM20413 - Certificate II in Engineering - Pathways) – RTO Busselton SHS – 50537

(52824WA – Certificate II in Building & Construction- Pathways- Trades) -

This is a proposed offering for the 2021 academic year. At the time of publication, no agreements have been entered into with a Registered Training Organisation for the delivery of this qualification.

Pathways

- Apprenticeships/Traineeships
- TAFE and/or further training
- A wide range of employment opportunities

Program (Yr. 11)

- English General
- Essential Maths
- Materials Design & Technology General
- 52824WA - Certificate II in Building and Construction Pathways – Trades
- MEM20413 - Certificate II in Engineering - Pathways
- Workplace Learning (Endorsed Program)

Work Placement (1 day per week)

- Building Trades
- Automotive
- Horticulture
- Metals and Engineering
- Furnishing Industries

Qualifications

- WACE/Secondary Graduation
- 52824WA - Certificate II in Engineering - Pathways
- MEM20413 - Certificate II in Building and Construction - Pathways - Trades
- Work Safe Certificates
- White Card

Course Benefits

- Broad ranging practical skills
- Valuable life skills
- Workplace skills
- Communication Skills

Mode of Delivery: On site (TTC), face to face

Course Structure: 4 days on-site
1 day work placement



RECREATION STUDIES

(SIS20513 Certificate II Sport - Coaching) – RTO Busselton SHS 50537

Pathways

- A wide range of employment opportunities
- TAFE: Certificate III/IV Fitness, Certificate IV Sport Development
- University Entry after completion of Certificate IV
- Navy, Army, Police Force

Program (Yr. 11)

- General English
- Essential Maths
- Physical Education Studies General
- Outdoor Education General
- SIS20513 - Certificate II Sport (Coaching)
- Workplace Learning (Endorsed Program)
- Outdoor Education Camps – two in Year 11, two in Year 12
- Recreation Camp Year 12
- Opportunities to assist in conducting carnivals, events, winter carnivals

Work Placement (1 day per week)

- Geographe Leisure Centre – Opportunity to do Pool Life Guard Certificate/Aust Swim Certificate
- Schools – Physical Education Placement, teacher assistant
- Recreation – Leisure Placements – Gyms, Horse Riding, Golf Course
- Childcare
- Retail (sports, surf shops)
- Government Agencies – Department of Transport, Dept Parks and Wildlife
- Tourism – Caves, Canoeing Tours, Surf School
- Dive Charters, Whale Watching, Professional Fishing

Qualifications

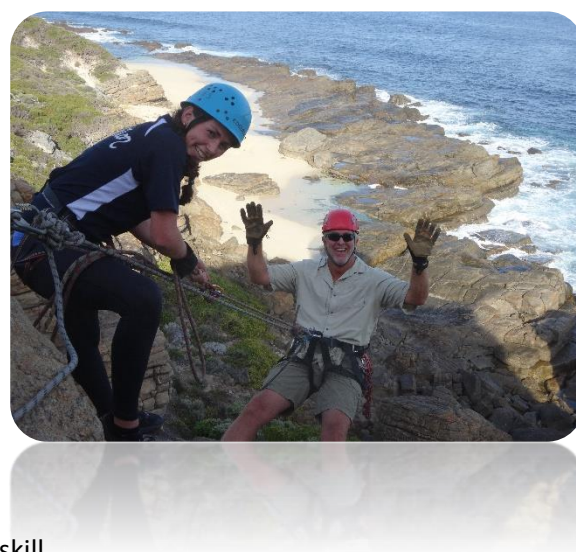
- WACE/Secondary Graduation
- SIS20513 - Certificate II in Sport (Coaching)
- Active After Schools
- Community Surf Rescue Certificate
- First Aid Certificate
- Sports Medicine Awareness Course
- Work Safe Certificates

Course Benefits

- Exceptional employment prospects
- Opportunity to participate in Sport / Physical Activity
- Links established with South West TAFE and ECU
- Increased confidence, communication and Interpersonal skill

Mode of Delivery: On-site and off-site (local Primary Schools – Geographe and West Busselton)
Face to face

Course Structure: 4 days on-site/1 day work placement



Appendix 4: Summary of On-Grid VET Programs

Building & Construction

(52824WA Certificate II in Building & Construction – Pathways - Trades) *This is a proposed offering for the 2021 academic year. At the time of publication, no agreements have been entered into with a Registered Training Organisation for the delivery of this qualification.*

Pathways

- Apprenticeships/Traineeships
- TAFE and/or further training
- A wide range of employment opportunities

Program (Yr. 11)

- English General
- Essential Maths
- Physical Education Studies General
- Materials Design & Technology General (Wood & Metals)
- 52824WA - Certificate II – Building and Construction (Pathways - Trades)
- Workplace Learning (Endorsed Program)

Work Placement (Block placements - 4 weeks per year)

- Building Trades
- Construction

Qualifications

- WACE/Secondary Graduation
- Certificate II in Building and Construction Pathways - Trades
- Work Safe Certificates
- White Card

Course Benefits

- Broad ranging practical skills
- Valuable life skills
- Work place skills
- Communication Skills

Mode of Delivery: On site (TTC)
Face to face



Kitchen Operations

(SIT20416 Certificate II Kitchen Operations) – RTO Busselton SHS 50537

Pathways

- Apprenticeships/Traineeships
- TAFE and/or further training
- A wide range of employment opportunities in the Hospitality industry

Program (Yr. 11)

- English Maths Essentials
- Physical Education / Media Production
- Visual Art / MDTW
- Food Science Technology / MDTM
- Certificate II Kitchen Operations
- Work placement (Blocks)

Work Placement (Block placements - 4 weeks per year)

- Cafes
- Restaurants
- Bakeries

Qualifications

- WACE/Secondary Graduation
- Certificate II Kitchen Operations
- Barista Certificate
- Work Safe Certificates

Course Benefits

- Compressive grounding in Food and Hospitality
- Broad ranging practical skills
- Valuable life skills
- Communication Skills

Mode of Delivery: 1 Day On site
(TTC Commercial Kitchen and Café)
Face to face



Nursing / Health Pathway

(ATAR / General & 52689WA Certificate IV in Preparation for Nursing Education)

This is a proposed offering for the 2021 academic year. At the time of publication, no agreements have been entered into with a Registered Training Organisation for the delivery of this qualification.

Pathways

- Direct University Entry
- Diploma of Nursing or other Allied Health Services – Bachelor of Nursing (or other Health Services)
- University Preparatory Course (ECU) – Bachelor of Nursing (or other Health Services)
- Articulation to University Nursing or other Allied Health Services, via TAFE and the University Preparatory Course
- A wide range of employment opportunities in the Health industry

Program (Yr. 11)

- Selection of 5 ATAR Subjects
- 52689WA Certificate IV in Preparation for Nursing Education

Qualifications

- WACE/Secondary Graduation
- ATAR (Depending on chosen subjects)
- Certificate IV in Preparation for Nursing Education
- Work Safe Certificates

Course Benefits

- Compressive grounding in Health Services
- Broad ranging practical skills
- Valuable life skills
- Communication Skills

Mode of delivery: 1 day off site
(Busselton SRC)
Face to face



Appendix 5: WACE Breadth-of-study list for the WACE in 2020

To ensure appropriate breath of study in your senior secondary studies, you are required to select at least one Year 12 course from each of List A and List B.

List A (Arts/Languages/Social Science)	List B (Mathematics/Science/Technology)
Career and Enterprise	Accounting and Finance
English	Applied Information Technology
Geography	Biological Sciences
Modern History	Chemistry
Music: Contemporary	Food Science Technology
Visual Art: ATAR	Human Biological Sciences
Visual Art: General	Materials Design Technology (Metals)
	Materials Design Technology (Wood)
	Mathematics
	Outdoor Education
	Physical Education
	Physics





Notes



Notes